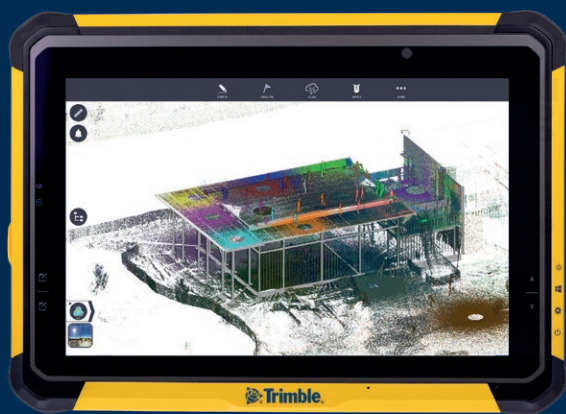


# Trimble FieldLink

CONSTRUCTION LAYOUT  
AND SCANNING SOFTWARE



One solution for  
all field layout and  
scanning tasks.



Tailored for the construction industry, Trimble® FieldLink offers a purpose-built experience to deliver accurate, reliable results both in the field and office. FieldLink empowers your team to effortlessly layout design information, intuitively validate ongoing work, and efficiently capture real site conditions—all with one easy-to-use software.

Designed to align seamlessly with the way things really work on-site, FieldLink brings an unprecedented level of adaptability to your everyday tasks. No matter if you're navigating through 2D plans or immersed in a 3D BIM environment, FieldLink offers a user-friendly interface that helps you get accurate, reliable results the first time, every time.



Find out more at:  
[fieldtech.trimble.com](https://fieldtech.trimble.com)

# Trimble FieldLink

LAYOUT AND SCANNING SOFTWARE



## FieldLink

### Layout and scanning

Simplify your layout and reality capture workflows with one purpose-built software that enables efficient, repeatable results directly in the field so you can answer the most critical questions throughout the construction process.

## FieldLink Office

### Data prep and validation

Use Trimble FieldLink Office to streamline your data prep process by easily creating detailed points for field layout, no matter the size of the project. After data has been captured on site, view, refine, and analyze point cloud data to produce high-quality deliverables in a flash.

## Trimble Connect

### Collaboration made easy

FieldLink seamlessly connects your office and field operations through deep integrations with Trimble Connect office software. Share data back and forth with a single click to empower active collaboration, increase field transparency, and better visualize and inspect data without adding complex software to your workflow.

## Construction workflows made easy

### Construction layout

Easily control Trimble's high-accuracy robotic total stations and GNSS receivers to precisely translate design intent from the office to the field. Effortlessly empower faster construction progress while increasing transparency and reducing rework and costly errors.

### Scan-to-BIM

FieldLink offers a construction-tailored experience for laser scanning, simplifying the capture process and helping you get from capture to complete in less time. With in-field registration, FieldLink eliminates painful processing time, enabling you to design directly off of reality capture data with fewer steps in between.

### Quality assurance

Easily confirm the quality of 3rd Party layout with Trimble's robotic total stations. Drive in-field scan-to-BIM analysis with Trimble's laser scanners to verify installation before leaving site, determine the flatness and levelness of concrete before it dries, and empower real-time data-driven decisions.

